



Electrolux
PROFESSIONAL

Standard Preparation 2200 mm Work Table with underframe

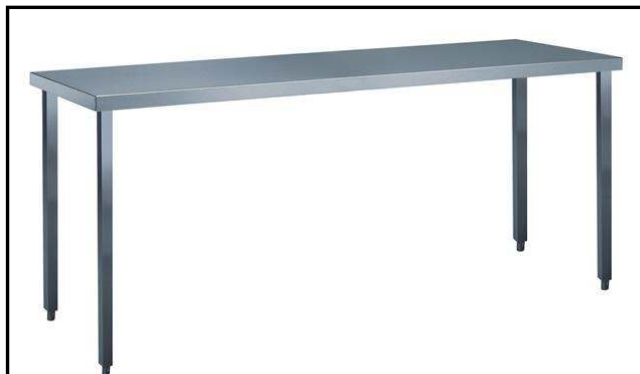
ITEM # _____

MODEL # _____

NAME # _____

SIS # _____

AIA # _____



133224 (TG2200N)

Work Table with underframe,
2200 mm

Short Form Specification

Item No. _____

The 50mm high worktop in 304 AISI stainless steel, 1mm in thickness, has upturned edges and incorporates a layer of sound deadening, waterproof and fireproof material. Square section legs 40x40mm on 1" height-adjustable feet in 304 AISI stainless steel.

Main Features

- Ideal for central positioning in the kitchen, either as island installation or back to back.

Construction

- 50 mm worktop in 304 AISI stainless steel, 10/10 in thickness with upturned edges and reinforced waterproof underpanel, incorporates a layer of sound deadening materials.
- 400 or 600 mm wide single drawer, chest of 4 drawers, lower shelf, three-sided underframe and set of castors as alternative to the feet, can be fitted as optional on all work tables.
- 40 mm-thick lower shelf (available as optional accessory on some models) slots easily into place at a height of 200 mm from the floor. Lower shelf is compulsory to install the chest of drawers.
- Square section legs and 40 mm height-adjustable feet in 304 AISI stainless steel.
- Table top slots into legs without using screws to facilitate installation.
- Provided with three-sided underframe as standard accessory.

Optional Accessories

- Set of 4 wheels (2 with brake) PNC 855150 ☐
d. 100mm for tables and sinks
(total height on wheels= 993 mm)
- Single drawer GN 1/1, 400mm PNC 855280 ☐
- Single drawer, 600mm PNC 855281 ☐
- Additional drawer, 600mm (to PNC 855295 ☐
set up a chest of 2, 3, 4
drawers)
- Additional drawer GN 1/1, PNC 855298 ☐
400mm (to set up a chest of 2,
3, 4 drawers)
- Lower shelf for 2200 mm PNC 855364 ☐
tables and sinks

APPROVAL: _____



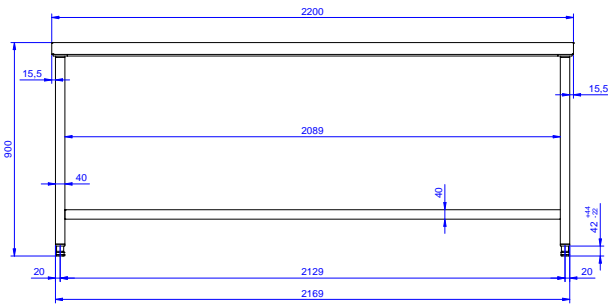
Experience the Excellence
www.electroluxprofessional.com



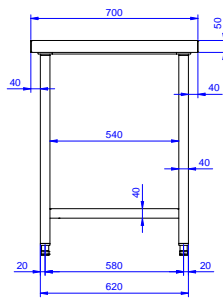
Electrolux
PROFESSIONAL

Standard Preparation 2200 mm Work Table with underframe

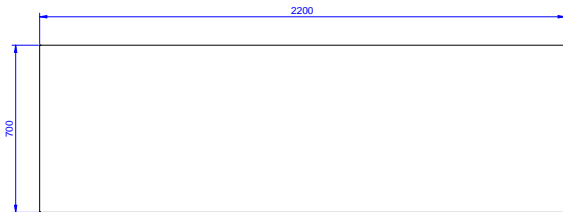
Front



Side



Top



Standard Preparation
2200 mm Work Table with underframe

The company reserves the right to make modifications to the products
without prior notice. All information correct at time of printing.

2025.12.11



Electrolux
PROFESSIONAL

Standard Preparation 2200 mm Work Table with underframe

Key Information:

External dimensions,
Width:

133224 (TG2200N) 2200 mm

External dimensions,
Depth:

700 mm

External dimensions,
Height:

900 mm

Worktop thickness:

50 mm

Net weight:

77 kg



Standard Preparation
2200 mm Work Table with underframe

The company reserves the right to make modifications to the products
without prior notice. All information correct at time of printing.

2025.12.11